

MULTI-FAMILY/RESIDENTIAL SITE FOR SALE

709 Eagle Road, Greensboro, NC



Property Information:

- 5.62 acres.
- 551' frontage on Landmark Center Blvd; 475' on Eagle Road
- New Zoning: CD-RM-26, which allows for up to 144 dwelling units.
- Located in Landmark Center in the heart of the West Wendover Ave and Bridford Pkwy corridor.
- Off-site water detention is in place.
- Site is rough graded.
- Traffic Count: Intersection of Landmark Center Dr & West Wendover Ave: 30,000 VPD
- Easy access to I-73/US-421.

Nearby Users: Apartments and townhomes, Home Depot, At Home, Hobby Lobby, Starbucks, Chick-fil-A, hotels, and numerous fast food and other restaurants.

RJS PROPERTIES INC

2730 Rozzelles Ferry Road
Suite "A"
Charlotte, NC 28208
www.rjsproperties.com

704.365.2152

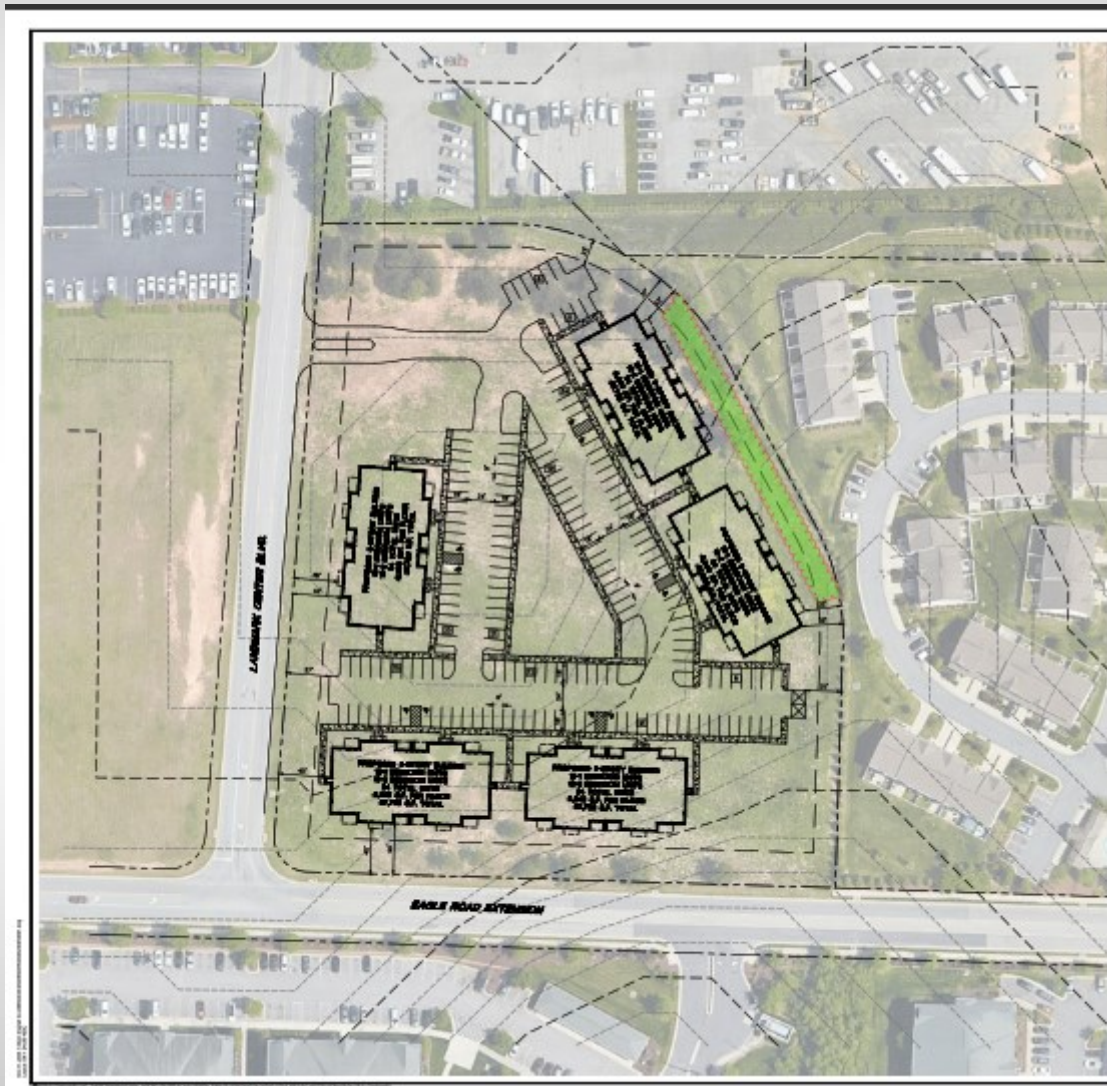
Bob Sweeney
bob@rjsproperties.com

RJ Sweeney
rj@rjsproperties.com

MULTI-FAMILY/RESIDENTIAL SITE FOR SALE

709 Eagle Road, Greensboro, NC

CONCEPTUAL PLAN



RJS PROPERTIES INC

2730 Rozzelles Ferry Road
Suite "A"
Charlotte, NC 28208
www.rjsproperties.com
704.365.2152

Bob Sweeney
bob@rjsproperties.com
RJ Sweeney
rj@rjsproperties.com