

# MULTI FAMILY & COMMERCIAL—FOR SALE

9350 US Hwy 1 & 9455 53rd Ave, Sebastian, FL



## Property Information:

Purchase price \$1,500,000.00

11.74 acres zoned Multi-Family

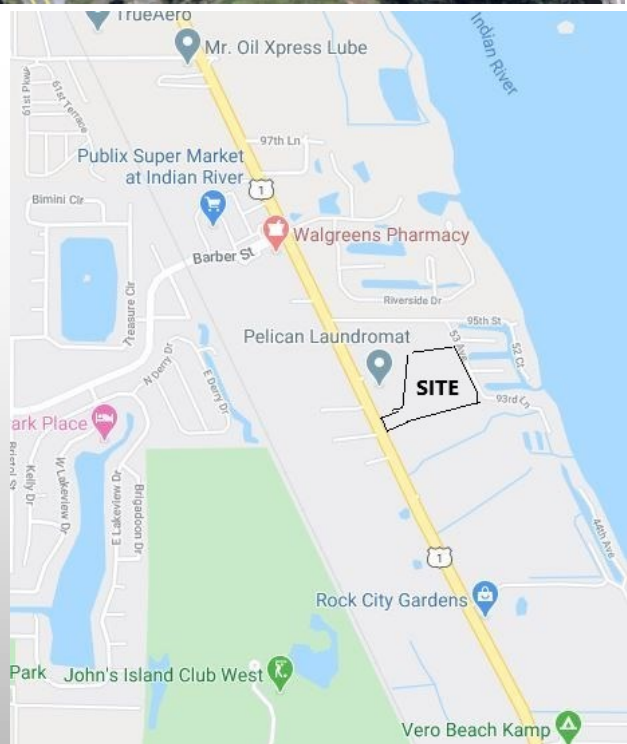
Multi-Family has access on 53rd Ave with possible access on US-1

.98 acres zoned Commercial

Commercial property has access on US 1

Located in close proximity to Indian River  
Shopping, Publix and restaurants nearby.

Average Daily Traffic Count on US 1 near property: 23,500



**RJS PROPERTIES INC**

2730 Rozzelles Ferry Road  
Suite "A"  
Charlotte, NC 28208  
www.rjsproperties.com

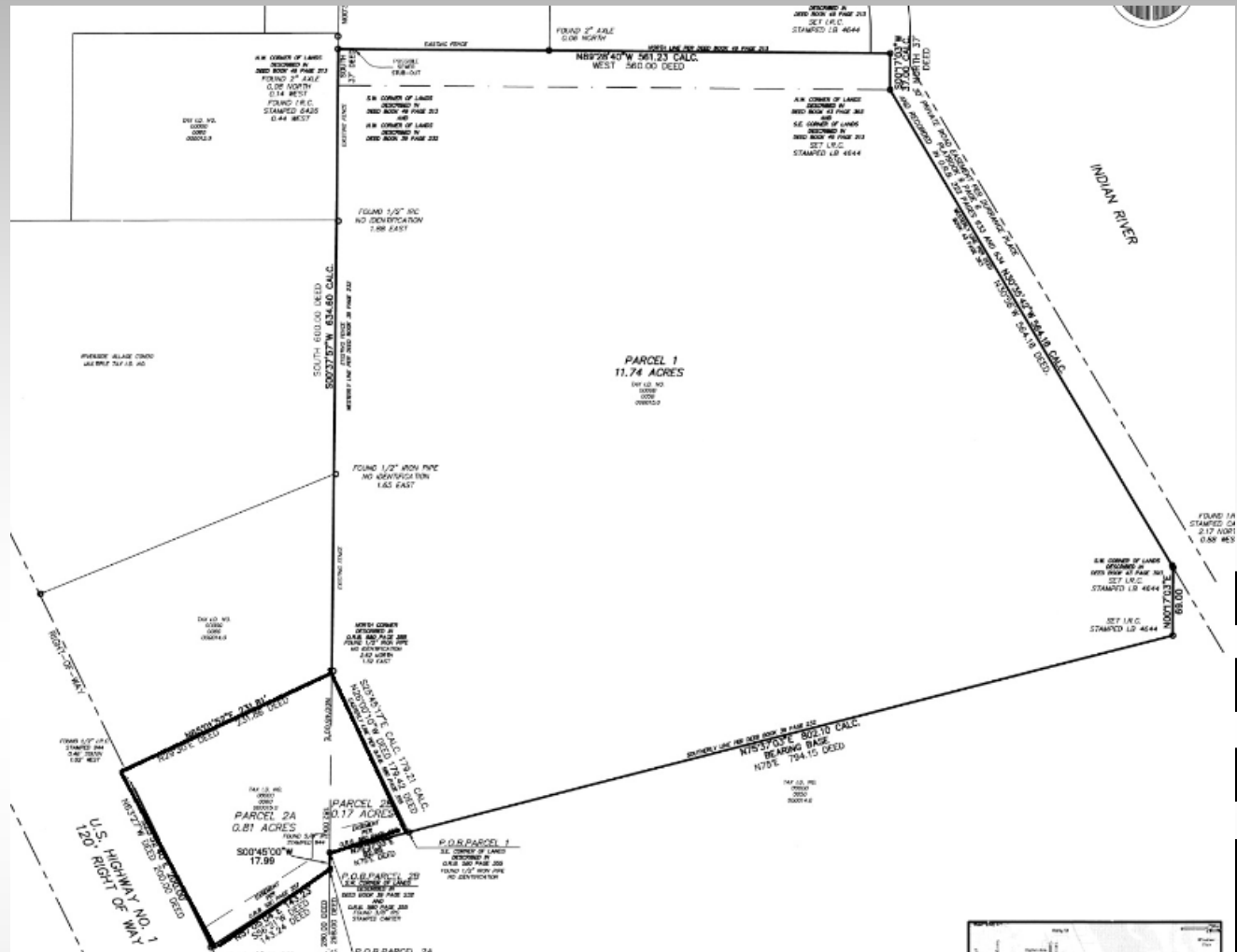
704.365.2152

Bob Sweeney  
[bob@rjsproperties.com](mailto:bob@rjsproperties.com)

Dave Chandler  
[Dave.chandlerjr@rjsproperties.com](mailto:Dave.chandlerjr@rjsproperties.com)

# MULTI FAMILY & COMMERCIAL—FOR LEASE

## 9350 US Hwy 1 & 9455 53rd Ave, Sebastian, FL



2730 Rozzelles Ferry Road  
 Suite "A"  
 Charlotte, NC 28208  
 www.rjsproperties.com  
 704.365.2152

Bob Sweeney  
[bob@rjsproperties.com](mailto:bob@rjsproperties.com)  
 Dave Chandler  
[Dave.chandlerjr@rjsproperties.com](mailto:Dave.chandlerjr@rjsproperties.com)